

# VOLUTE MODEL

## FLOOR PLAN

### 2 STORY



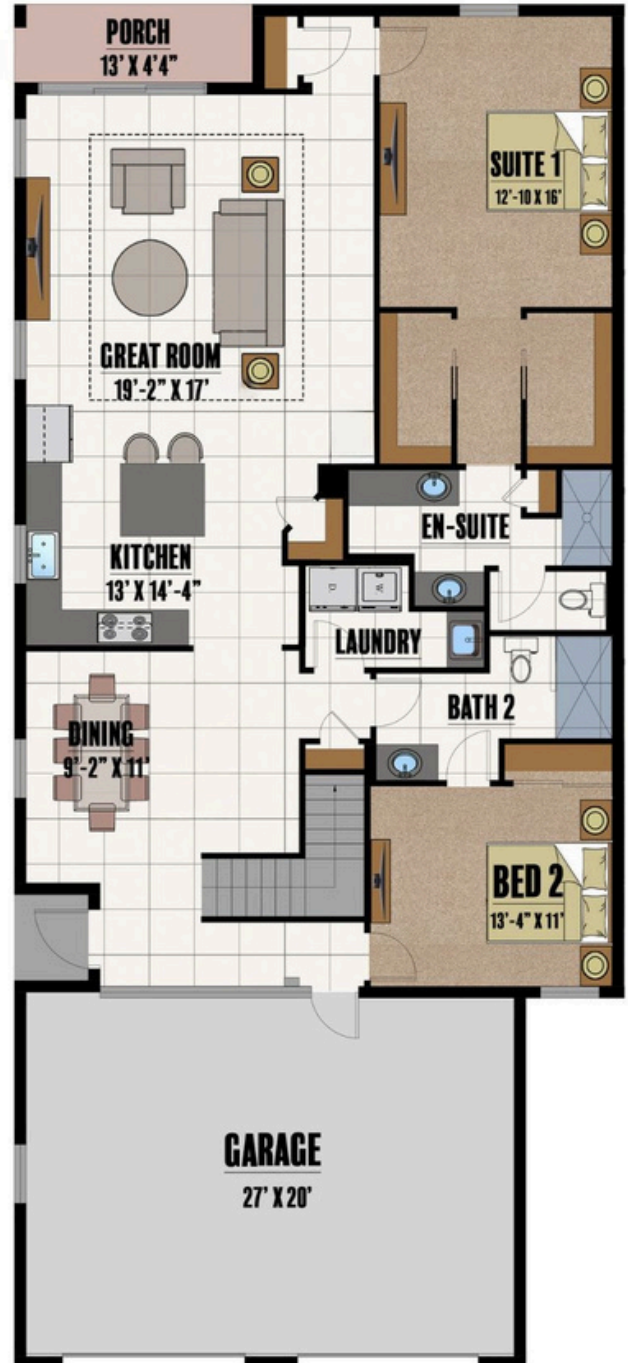
SECOND LEVEL

### Square Footage

1st Living	1,734
2nd Living	644
Garage	592
Porch	57
Entry	19

**Total 3,046**

### 10' CEILINGS



All dimensions and specifications are approximate and subject to change in the field. Rendering and floor plan are for illustrative purposes only and may not reflect the actual characteristics of the home. Please discuss options with your sales person.

511 SW Port St. Lucie Blvd.  
Port St. Lucie, FL 34953  
LIC# CGC1524734  
772-336-7653  
[www.grozahomes.com](http://www.grozahomes.com)